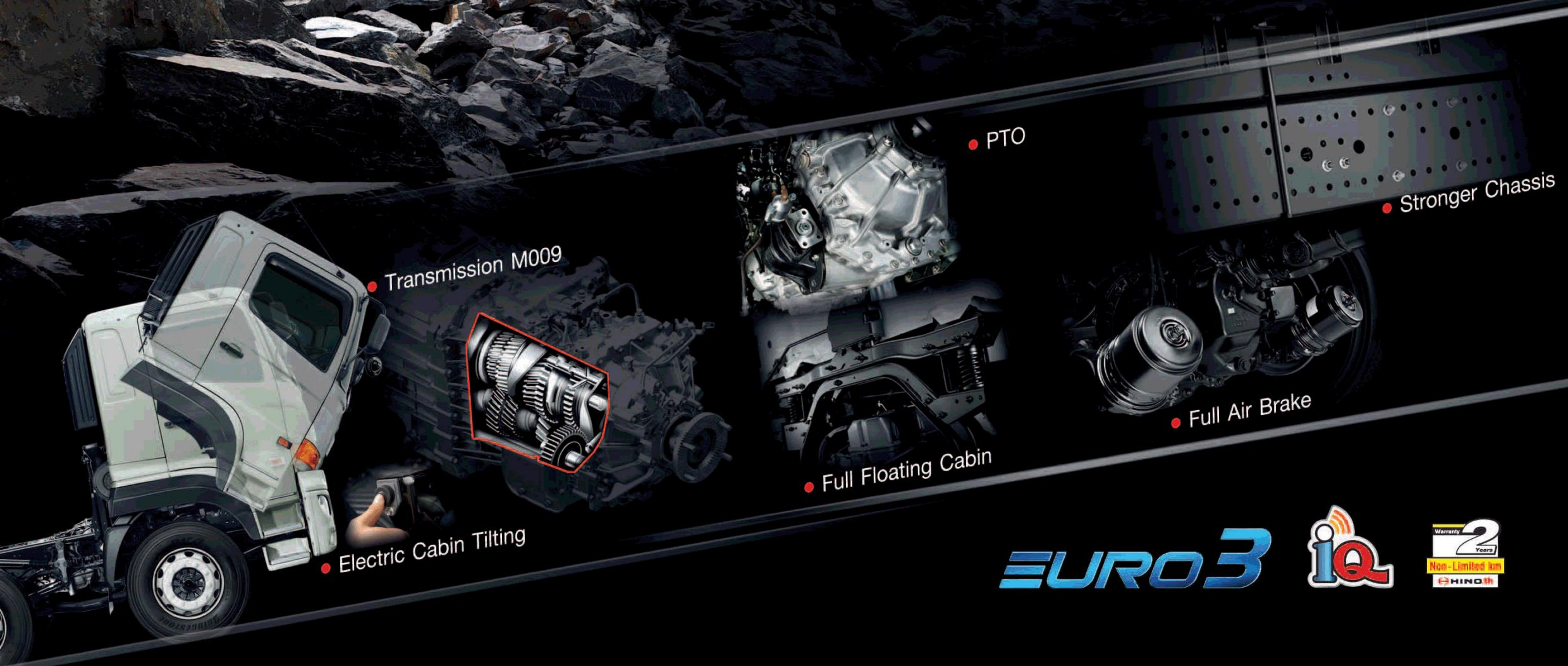


VICTOR



• Transmission M009

• Electric Cabin Tilting

• PTO

• Full Floating Cabin

• Stronger Chassis

• Full Air Brake

EURO 3



Non-Limited km



PERFORMANCE & GEAR RATIO

Model		FM2PN1D-XHT	
Max. speed (Km/h)		116	125
Gradeability % (Degree)		67.1 (33.8)	60.3 (31.1)
Transmission model		M009 OD	
Gear ratio	Crawler	10.178	
	1st	6.986	
	2nd	5.063	
	3rd	3.636	
	4th	2.633	
	5th	1.921	
	6th	1.392	
	7th	1.000	
	8th	0.724	
Rev.	9.874		
Rear axle gear ratio		5.250	4.875

REAR AXLE

Type Full-floating, Single reduction, Hypoid gearing
Axle capacity 21,000 kg

SERVICE BRAKE

Type Leading-trailing shoes operating by S-cam shaft and slack adjuster acting on all wheels
Control Full air, Dual circuits

PARKING BRAKE

Type Wheel parking acting on front and R1 axle

EXHAUST BRAKE

Type Butterfly valve type

STEERING

Type Recirculating ball with hydraulic booster
Gear ratio 21.6

SUSPENSION

Front Semi-elliptic leaf springs with shock absorbers
Rear Semi-elliptic main with torque rods

WHEELS AND TIRES

Disc wheel 22.5 x 7.50, 10 studs
Tire size 11R22.5-16PR

FUEL TANK

Capacity 390 L

CHASSIS FRAME

Type Ladder-shaped channel section side rails "I"

CAB

Type All steel welded construction, Laminated safety glass applied

ELECTRICAL EQUIPMENT

Batteries 12 V, 120 Ah. X 2
Alternator 24 V, 60 A

AIR CONDITIONER

SAFETY Denso
 SRS Airbag, Adjustable headlamp

COMFORTABILITY

Power window & Central lock

STANDARD EQUIPMENT

PTO
 Wind deflector, ABS

ENGINE

HINO P11C-VU

Max.output (EEC Net) 280 kW (380 PS)
 at 2,100 rpm
Max.torque (EEC Net) 1,422 N.m (145 kgf.m)
 at 1,500 rpm
Type Diesel 4-stroke cycle, Vertical 6 cylinder
 In-line, Overhead valve, Water-cooled
 Turbo intercooler
Fuel injection pump Electronic control, Commonrail type
Bore x Stroke 122 x 150 mm
Piston displacement 10,520 cc
Compression ratio 16.0 : 1
Emission level EURO 3

CLUTCH

Dry single plate, Hydraulic control
 with air booster

TRANSMISSION

9 Speeds, Overdrive
 Synchromesh crawler - 8th

FRONT AXLE

Type Reverse Elliot "I" section beam
Axle capacity 7,500 kg

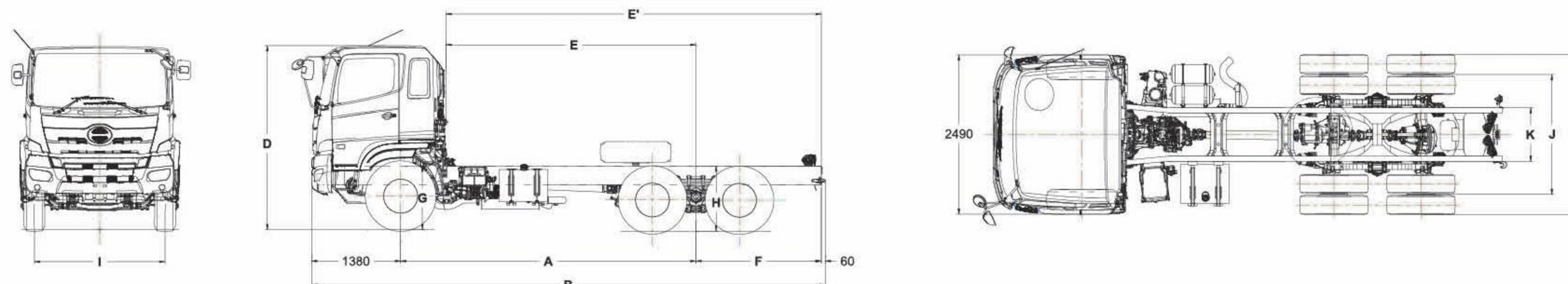
Description			FM2PN1D-XHT	
Gross vehicle weight (GVW)		kg	25,000	
Chassis weight	Front	kg	3,650	
	Rear	kg	4,050	
	Total	kg	7,700	
Turning radius	Tire	mm	8,400	
	Swept	mm	9,200	
Road clearance	At differential case	mm	250	
Number of seat			3	

DIMENSIONS

Unit : mm

Model	A	B	C	D	E	E'	F	G	H	I	J	K
FM2PN1D-XHT	4,605	8,295	2,460	2,900	3,860	6,110	2,250	1,020	1,070	2,055	1,860	840

A - Wheelbase B - Overall length C - Rear tire width D - Overall height E - Cab to rear axle E' - Cab to end frame
 F - Rear overhang G - Frame height at front axle H - Frame height at rear axle I - Front tread J - Rear tread K - Chassis width



Remark : HINO MOTORS SALES (Thailand) Ltd., has rights to change specifications without prior notice.



Hino Motors Sales (Thailand) Ltd.
 Tel. 0-2900-5000 Fax : 0-2900-5288 Hotline : 0-2305-4442
 E-mail: info@hinothailand.com http://www.hinothailand.com



f Hino Thailand Fan Club @hinothailand hinothailandfanclub www.hinothailand.com



สั่งซื้อรถติดต่อ

LINE: @LOVEHINO

LOVEHINO HOTLINE

☎ 085-137-5367