

 **HINO.th**

NEW

HINO
500 **FG**

FG8JJ1A FG8JM1A FG8JP1A FG8JR1A FG8JT1A

VICTOR



• Head Lamp Leveling Adjustable

• Transmission MX06

• Full Air Brake

• Stronger Chassis

EURO3

iq

Warranty **2** Year
Non-Limited km
HINO.th

PERFORMANCE & GEAR RATIO

Model		FG8JJ1A-JGT, FG8JM1A-JGT, FG8JP1A-JGT, FG8JR1A-JGT, FG8JT1A-JGT
Max. speed (Km/h)		128
Gradeability % (Degree)		34.9 (19.2)
Transmission model		MX06
Gear ratio	1st	6.515
	2nd	4.224
	3rd	2.441
	4th	1.473
	5th	1.000
	6th	0.702
Rev.		6.991
Rear axle gear ratio		5.857

ENGINE

HINO J08E-WJ

Max.output (EEC Net)	176 kW (240 PS) at 2,500 rpm
Max.torque (EEC Net)	716 N.m (73 kgf.m) at 1,500 rpm
Type	Diesel 4-stroke cycle, Vertical 6 cylinder In-line, Overhead camshaft, Water-cooled Turbo intercooler
Fuel injection pump	Electronic control, Commonrail type
Bore x Stroke	112 x 130 mm
Piston displacement	7,684 cc
Compression ratio	18.0 : 1
Emission level	EURO 3

CLUTCH

Dry single plate, Hydraulic control
with air booster

TRANSMISSION

6 Speeds, Overdrive
Synchromesh 2nd-6th

FRONT AXLE

Type	Reverse elliot "I" section beam
Axle capacity	5,500 kg

REAR AXLE

Type	Full-floating, Single reduction, Hypoid gearing
Axle capacity	11,000 kg

SERVICE BRAKE

Type	Leading trailing shoes operated by S-cam shaft and slack adjuster acting on all wheels
Control	Full air, Dual circuits

PARKING BRAKE

Type	Wheel parking acting on rear axle
------	-----------------------------------

EXHAUST BRAKE

Type	Butterfly valve type
------	----------------------

STEERING

Type	Recirculating ball with hydraulic booster
Gear ratio	19.0

SUSPENSION

Front	Semi-elliptic leaf springs with shock absorbers
Rear	Semi-elliptic main and auxiliary leaf springs

WHEELS AND TIRES

Disc wheel	22.5 x 7.50, 10 studs
Tire size	11R22.5-16PR

FUEL TANK

Capacity	200 L
----------	-------

CHASSIS FRAME

Type	Ladder-shaped channel section side rails "] "
------	--

CAB

Type	All steel welded construction, Laminated safety glass applied
------	--

ELECTRICAL EQUIPMENT

Batteries	12 V, 120 Ah. X 2
Alternator	24 V, 60 A

AIR CONDITIONER

Denso

SAFETY

SRS Airbag, Adjustable headlamp

COMFORTABILITY

Power window & Central lock

OPTION

Wind deflector, ABS, PTO

Description		FG8JJ1A-JGT	FG8JM1A-JGT	FG8JP1A-JGT	FG8JR1A-JGT	FG8JT1A-JGT
Gross vehicle weight (GVW)	kg	15,000				
Chassis weight	Front	2,970	3,010	3,055	3,070	3,100
	Rear	2,055	2,065	2,160	2,165	2,200
	Total	5,025	5,075	5,215	5,235	5,300
Turning radius	Tire	7,500	8,700	9,400	9,900	10,800
	Swept	8,240	9,400	10,130	10,600	11,500
Road clearance	At differential case	270	240	240	240	240
Number of seat		3				

DIMENSIONS

Unit : mm

Model	A	B	C	D	E	E'	F	G	H	I	J	K
FG8JJ1A-JGT	4,340	7,755	2,435	2,730	3,510	5,585	2,075	1,000	1,090	2,055	1,835	840
FG8JM1A-JGT	5,080	8,895	2,435	2,730	4,250	6,725	2,475	1,030	1,040	2,055	1,835	840
FG8JP1A-JGT	5,530	9,520	2,435	2,730	4,700	7,350	2,650	1,030	1,040	2,055	1,835	840
FG8JR1A-JGT	5,830	9,995	2,435	2,730	5,000	7,825	2,825	1,020	1,060	2,055	1,835	840
FG8JT1A-JGT	6,430	10,895	2,435	2,730	5,600	8,725	3,125	1,020	1,060	2,055	1,835	840

A - Wheelbase

B - Overall length

C - Rear tire width

D - Overall height

E - Cab to rear axle

E' - Cab to end frame

F - Rear overhang

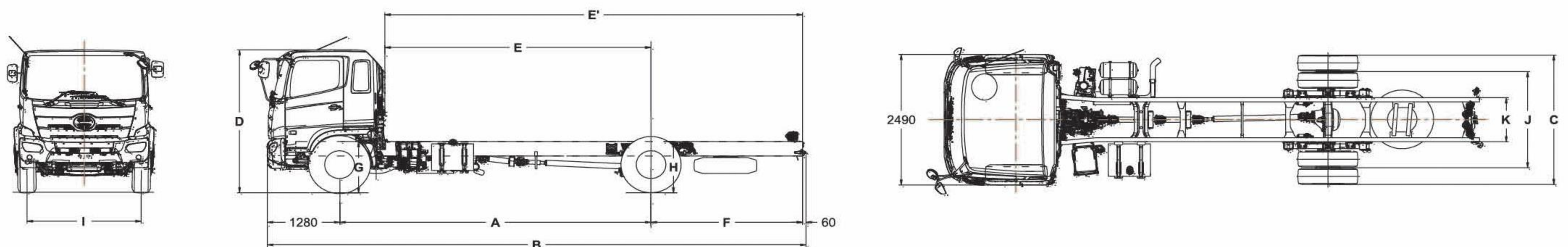
G - Frame height at front axle

H - Frame height at rear axle

I - Front tread

J - Rear tread

K - Chassis width



Remark : HINO MOTORS SALES (Thailand) Ltd., has rights to change specifications without prior notice.



Hino Motors Sales (Thailand) Ltd.

Tel. 0-2900-5000 Fax : 0-2900-5288 Hotline : 0-2305-4442

E-mail: info@hinothailand.com http://www.hinothailand.com



ตั้งชื่อรถติดต่อ
LINE: @LOVEHINO
LOVEHINO HOTLINE
☎ 085-137-5367