

 **HINO.th**

NEW

**HINO
500**

FG

FG8JF1D

VICTOR



• Head Lamp Leveling Adjustable

• PTO

• Full Air Brake

• Stronger Chassis

EURO3



Non-Limited km
HINO.th

PERFORMANCE & GEAR RATIO

Model		FG8JF1D-JGT
Max. speed (Km/h)		119
Gradeability % (Degree)		38.0 (20.7)
Transmission model		MX06
Gear ratio	1st	6.515
	2nd	4.224
	3rd	2.441
	4th	1.473
	5th	1.000
	6th	0.702
	Rev.	6.991
Rear axle gear ratio		6.428

ENGINE

HINO J08E-WJ

Max.output (EEC Net) 176 kW (240 PS)
at 2,500 rpm

Max.torque (EEC Net) 716 N.m (73 kgf.m)
at 1,500 rpm

Type Diesel 4-stroke cycle, Vertical 6 cylinder
In-line, Overhead camshaft, Water-cooled
Turbo intercooler

Fuel injection pump Electronic control, Commonrail type

Bore x Stroke 112 x 130 mm

Piston displacement 7,684 cc

Compression ratio 18.0 : 1

Emission level EURO 3

CLUTCH

Dry single plate, Hydraulic control
with air booster

TRANSMISSION

6 Speeds, Overdrive
Synchromesh 2nd-6th

FRONT AXLE

Type Reverse Elliot "I" section beam

Axle capacity 5,500 kg

REAR AXLE

Type Full-floating, Single reduction, Hypoid gearings

Axle capacity 11,000 kg

SERVICE BRAKE

Type Leading-trailing shoes operating by S-cam
shaft and slack adjuster acting on all wheels

Control Full air, Dual circuits

PARKING BRAKE

Type Wheel parking acting on rear axle

EXHAUST BRAKE

Type Butterfly valve type

STEERING

Type Recirculating ball with hydraulic booster

Gear ratio 19.0

SUSPENSION

Front Semi-elliptic leaf springs with shock absorbers

Rear Semi-elliptic main and auxiliary leaf springs

WHEELS AND TIRES

Disc wheel 20 x 7.50, 10 studs

Tire size 11.00-20-16 PR

FUEL TANK

Capacity 200 L

CHASSIS FRAME

Type Ladder-shaped channel section side rails "I"

CAB

Type All steel welded construction, Laminated
safety glass applied

ELECTRICAL EQUIPMENT

Batteries 12 V, 120 Ah. X 2

Alternator 24 V, 60 A

AIR CONDITIONER

Denso

SAFETY

SRS Airbag, Adjustable headlamp

COMFORTABILITY

Power window & Central lock

STANDARD EQUIPMENT

PTO

OPTION

Wind deflector and ABS

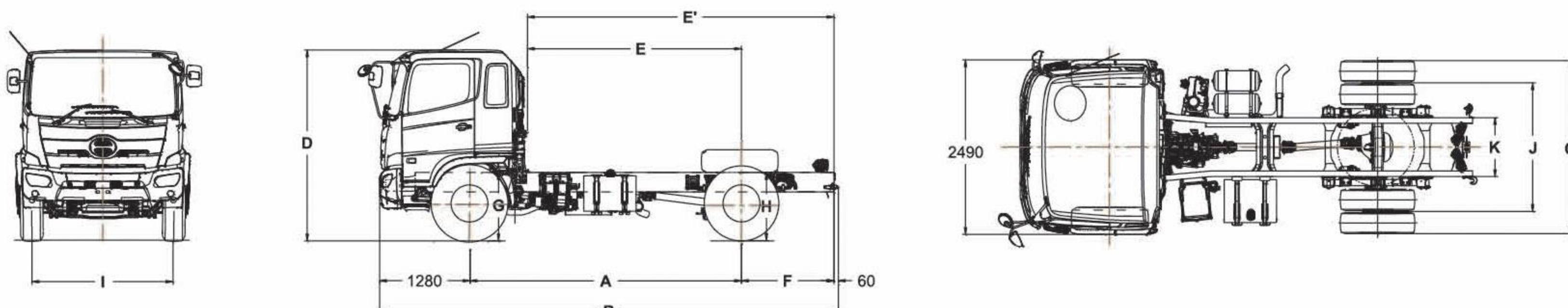
Description		FG8JF1D-JGT
Gross vehicle weight (GVW)		kg 15,000
Chassis weight	Front	kg 3,050
	Rear	kg 2,100
	Total	kg 5,150
Turning radius	Tire	mm 6,600
	Swept	mm 7,340
Road clearance	At differential case	mm 240
Number of seat		3

DIMENSIONS

Unit : mm

Model	A	B	C	D	E	E'	F	G	H	I	J	K
FG8JF1D-JGT	3,730	6,390	2,475	2,750	2,910	4,230	1,320	1,020	1,090	2,055	1,835	840

A - Wheelbase B - Overall length C - Rear tire width D - Overall height E - Cab to rear axle E' - Cab to end frame
F - Rear overhang G - Frame height at front axle H - Frame height at rear axle I - Front tread J - Rear tread K - Chassis width



Remark : HINO MOTORS SALES (Thailand) Ltd., has rights to change specifications without prior notice.



Hino Motors Sales (Thailand) Ltd.
Tel. 0-2900-5000 Fax : 0-2900-5288 Hotline : 0-2305-4442
E-mail: info@hinothailand.com http://www.hinothailand.com



Hino Thailand Fan Club @hinothailand hinothailandfanclub www.hinothailand.com



สั่งซื้อรถติดต่อ

LINE: @LOVEHINO

LOVEHINO HOTLINE

085-137-5367